

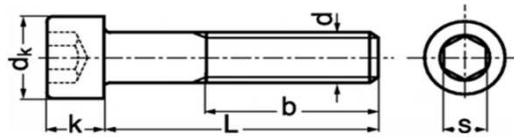
d	M3	M4	M5	M6	M8	M10	M12	M14	M16
L									
6	011	013							
8	012	020	040	070					
10	001	021	041	071	100				
12	002	022	042	072	101				
14	003	023	043	073	102				
16	004	024	044	074	103	130			
18	005	025	045	075	104	131			
20	006	026	046	076	105	132	160		
25	007	027	047	077	106	133	161	190	220
30	008	028	048	078	107	134	162	191	221
35	009	029	049	079	108	135	163	192	222
40	010	030	050	080	109	136	164	193	223
45		031	051	081	110	137	165	194	224
50		032	052	082	111	138	166	195	225
55		033	053	083	112	139	167	196	226
60		034	054	084	113	140	168	197	227
65		035	055	085	114	141	169	198	228
70		036	056	086	115	142	170	199	229
75			057	087	116	143	171	200	230
80			058	088	117	144	172	201	231
90			059	089	118	145	173	202	232
95					119				
100			060	090	120	146	174	203	233
110			061	091	121	147	175	204	234
120				092	122	148	176	205	235
130					123	149	177	206	236
140					124	150	178	207	237
150					125	151	179	208	238
160					126	152	180	209	239
170								210	240
180					127	153	181	211	241
190							182	212	242
200							183	213	243
210									244
220							184		245
240									246
260									247
280									

	ON REQUEST
--	------------

REMARK : The items above the line are fully threaded

Standard Reference	ISO 4762 EN 24762 - DIN 912	Issue Date	04/12/2017
TUVASAS Standard	SP.01002	Rev. Date	04/12/2017
Hexagon Socket Head Cap Screw		Rev. 00	Sheet 1 Of 3

All rights reserved. No parts of this document may be reproduced or utilized in any form or by any means, electronic or mechanical, including photocopying and microfilm without permission in write form.



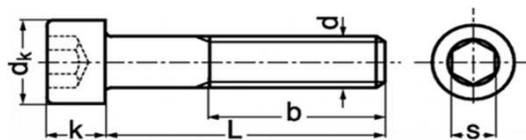
d	M18	M20	M22	M24	M27	M30	M33	M36
L								
6								
8								
10								
12								
14								
16								
18								
20								
25								
30		270						
35	250	271		320				
40	251	272	300	321				
45	252	273	301	322				
50	253	274	302	323				
55	254	275	303	324				
60	255	276	304	325				
65	256	277	305	326				
70	257	278	306	327	015			
75		279	307	328				
80	258	280	308	329	016	068		
90	259	281	309	330	017	069		
95								
100	260	282	310	331	018	093	156	216
110	261	283	311	332	019	094	157	217
120	262	284	312	333	037	095	158	218
130	263	285	313	334	038	096	159	219
140	264	286	314	335	039	097	185	248
150	265	287	315	336	062	098	186	249
160	266	288	316	337	063	099	187	269
170		289		338				
180	267	290	317	339	064	128	188	297
190		291		340				
200	268	292	318	341	065	129	189	298
210		293						
220		294		014	066	154	214	299
240		295		342	067	155	215	319
260		296						
280				343				

	ON REQUEST
--	------------

REMARK : The items above the line are fully threaded

Standard Reference	ISO 4762 EN 24762 - DIN 912	Issue Date	04/12/2017
TUVASAS Standard	SP.01002	Rev. Date	04/12/2017
Hexagon Socket Head Cap Screw		Rev. 00	Sheet 2 Of 3
		-	-

All rights reserved. No parts of this document may be reproduced or utilized in any form or by any means, electronic or mechanical, including photocopying and microfilm without permission in write form.



Related Size :

d		M3	M4	M5	M6	M8	M10	M12	M14	M16
dk	min. xxx	5,5	7	8,5	10	13	16	18	21	24
k	basic xxxx	3	4	5	6	8	10	12	14	16
s	basic xxxx	2,5	3	4	5	6	8	10	12	14
b	basic xxxx	18	20	22	24	28	32	36	40	44

d		M18	M20	M22	M24	M27	M30	M33	M36
dk	min. xxx	27	30	33	36	40	45	50	54
k	basic xxxx	18	20	22	24	27	30	33	36
s	basic xxxx	14	17	17	19	19	22	24	27
b	basic xxxx	48	52	56	60	66	72	78	84

To create the complete part number for normalized item refer to the following table

TUVASAS Standard								
	Fix	.	Main Group	Subgroup	-	Dash Number	Materia *	Treatment *
Generic	SP	.	XX	XXX	-	XXX	X	X
Example	SP	.	01	001	-	111	J	B

* For material and treatment refer to standard SP.00001

Standard Reference	ISO 4762 EN 24762 - DIN 912	Issue Date	04/12/2017
TUVASAS Standard	SP.01002	Rev. Date	04/12/2017
Hexagon Socket Head Cap Screw	Rev. 00	Sheet	3 Of 3
-	-	-	-

All rights reserved. No parts of this document may be reproduced or utilized in any form by any means, electronic or mechanical, including photocopying and microfilm without permission in write form.